

# FIND THE MISSING TERM

NCERT  
10/11/2017

ex 1)  $\boxed{\phantom{000}} - \frac{7}{8} = 2\frac{1}{5}$

$\boxed{\phantom{000}} - \frac{7}{8} = 2\frac{1}{5} + \frac{7}{8}$

THANKS!

$\boxed{9} - 7 = 2$

$\boxed{\phantom{000}} +$

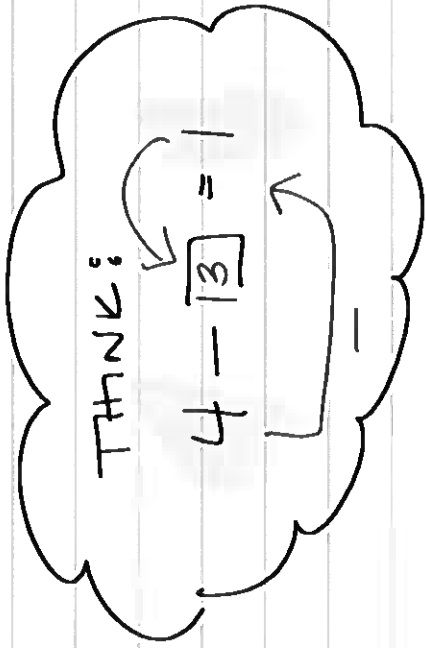
$\boxed{\phantom{000}} = \frac{7}{8} + 2\frac{1}{5}$

$= \frac{7 \times 5}{8 \times 5} + \frac{11 \times 8}{5 \times 8}$

$= \frac{35 + 88}{40}$

$$= \frac{123}{40} = 3 \frac{3}{40}$$

ex:  $\frac{5}{5} - \frac{4}{5} = \frac{1}{5}$



$$\boxed{\phantom{00}} = \frac{4}{5} - \frac{1}{4}$$

$$= \frac{4 \times 4}{5 \times 4} - \frac{1 \times 5}{4 \times 5}$$

$$= \frac{16 - 5}{20}$$

$$= \frac{-15}{20} = -\frac{3}{4}$$

THANK:  $5 \times \boxed{3} = 15$

EX.3)  $5.6 \times \boxed{\phantom{00}} = -7.28$

$\boxed{\phantom{00}} = 5.6$  (9's)

$$\begin{array}{r} 1.3 \\ \hline 82.8 \\ \underline{56} \\ 168 \\ \underline{168} \\ 0 \end{array}$$

$\boxed{\phantom{00}} = -1.3$

ex. 4

$$\square \div -\frac{7}{9} = -\frac{3}{2}$$

x

THINK!

$$\square \div 2 = 4$$

$$\square = (-\frac{7}{9}) \left(-\frac{3}{2}\right)$$

$$= +\frac{7}{3}$$

ex. 5

$$\frac{9}{10}$$

$$\square \div \frac{3}{5} = -\frac{4}{5}$$

THINK!

$$\square \div 2 = 5$$

$$\boxed{=} \frac{9}{10} \div \frac{4}{5}$$

$$= \frac{9}{10} \times \frac{5}{4}$$

$$= \frac{9}{2} = 4\frac{1}{2}$$

$$\text{EX. 6)} \quad \boxed{\phantom{00}} \div \boxed{\phantom{00}} (-1.7) = 5.6$$

THINK:  $\boxed{12} \div 2 = 6$

$$\boxed{\phantom{00}} = (-1.7)(5.6)$$

34

17

$$\begin{array}{r} 56 \\ \underline{102} \\ 950 \\ \underline{952} \end{array}$$

$$\text{EX. 7)} \quad -1.092 \div \boxed{\phantom{00}} = -2.1$$

THINK:  $12 \div \boxed{3} = 4$

$$\boxed{\phantom{00}} = -1.092 \div -2.1$$

$$= +0.52$$