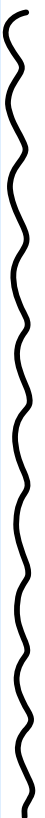


## 2.1c MULTIPLYING & DIVIDING DECIMALS.

p49

2/7/2017

TO MULT. DECIMALS:



STEP 1: DECIDE ON ANSWER'S SIGN

STEP 2: MULTIPLY THE NUMBERS AS IF  
THEY HAD NO DECIMALS.

STEP 3: DECIDE ON HOW MANY DECIMAL  
PLACES THE ANSWER SHOULD HAVE.

ex)  $(-1.2)(0.11) = -0.132$

STEP 1:  $0.11$

STEP 2:  $12$

$11$

$$\begin{array}{r} 12 \\ \times 11 \\ \hline 132 \end{array}$$

STEP 3: ORIGINALITY

WE HAD 3 DECIMAL PLACES SO THE ANSWER SHOULD HAVE 3 DEC. PLACES.

ex)  $(-0.5)(-1.62) = +0.810$

STEP 1:  $1.62$  (3 DECIMAL PLACES)

$$\begin{array}{r} 1 \\ \times 162 \\ \hline 810 \end{array}$$

$$\text{ex) } (2.\overset{\cup}{3}\overset{\cup}{4}) (-0.\overset{\cup}{1}\overset{\cup}{1}) = -0.2574$$

234

11

234

2340

2574

TO DIVIDE DECIMALS :

$$\text{ex) } \underset{\text{DIVIDEND}}{-1.08} \div \underset{\text{DIVISOR}}{0.8} = \boxed{\underset{\text{QUOTIENT}}{\quad}}$$

STEP 1: DECIDE ON ANSWER'S SIGN

STEP 2: SET UP A LONG DIVISION

$$\begin{array}{r} \text{DIVISOR} \overline{) \text{DIVIDEND}} \\ \text{QUOTIENT} \end{array}$$

STEP 3: "BUMP" OUT THE DIVISOR'S DECIMAL & WHATEVER YOU DID TO THE DIVISOR, YOU HAVE TO DO TO THE DIVIDEND.

STEP 4: COMPLETE LONG DIVISION

ex)  $-1.08 \div 0.8 = -1.35$  ①

②  $0.8 \overline{) 1.08} \Rightarrow$  ④  $8 \overline{) 10.80}$   
③  $\begin{array}{r} -8 \\ \hline 28 \\ -24 \\ \hline 40 \end{array}$

ex)  $(-0.92) \div (-0.4) = +2.3$

$0.4 \overline{) 0.92} \Rightarrow$   $4 \overline{) 9.2}$   
↙  $\begin{array}{r} 2.3 \\ \hline 8 \\ \hline 12 \end{array}$

MORE CHALLENGING:

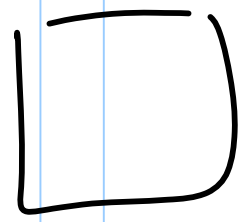
ex)  $\boxed{\phantom{00}} \div \frac{-7}{9} = \frac{-2}{3}$

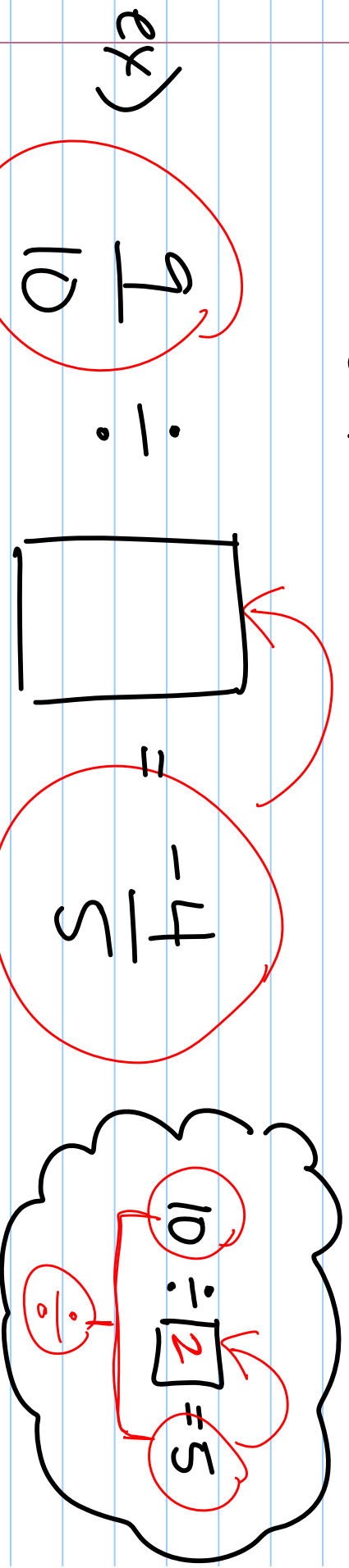
\* REMEMBER WHEN YOU GET STUCK, TRY

SIMPLIFYING THE QUESTION:

$\boxed{10} \div 2 = 5$

$$\left(-\frac{7}{9}\right)\left(-\frac{2}{3}\right) = \boxed{\phantom{00}}$$

$$\frac{27}{71} +$$




$$\left(\frac{9}{10} \div \left(-\frac{4}{5}\right)\right) = \frac{9}{10} \times \left(-\frac{5}{4}\right)$$

$$= -\frac{9}{8} \text{ or } -1\frac{1}{8}$$

ex)  $\square \div (-1.7) = 5.6$

$$\square = (-1.7)(5.6)$$

$$\square = -9.52$$

THINK:  
 $\square \div 2 = 4$

$$\begin{array}{r} 43 \\ 17 \\ \hline 956 \end{array}$$

$$\begin{array}{r} 102 \\ 858 \\ \hline 952 \end{array}$$



ex)

$$-1.092 \div \boxed{\phantom{00}} = -2.1$$

$\frac{0}{0}$

$$-1.092 \div -2.1 = \boxed{+0.52}$$

THINK!  
 $8 \div \boxed{4} = 2$

$$2.1 \overline{) 1.092} \Rightarrow 21 \overline{) 26.92}$$

$$\begin{array}{r} .52 \\ 26.92 \overline{) 26.92} \\ \underline{105} \\ 42 \end{array}$$

